

# Linutop 2

## Quick user guide



Firefox



Open Office



VLC player



Ubuntu

## Small low maintenance PC

## Linutop connectors:



4 USB Ports    Power button    Mic    Headset



Audio out    VGA    Ethernet    Power    Lock

## Specifications:

**Processor:** AMD Geode LX800 (x86)

**Memory RAM:** 512 MB up to 1GB

**Memory Flash:** 1 GB internal

**Network:** 10/100baseT Ethernet (RJ-45)

**Thin client:** PXE Boot

**Power:** DC in 12V - 3,3A (<8W)

**Weight:** 580 gr (20 oz) .

Strong Aluminum Case with security slot

## Linutop Applications

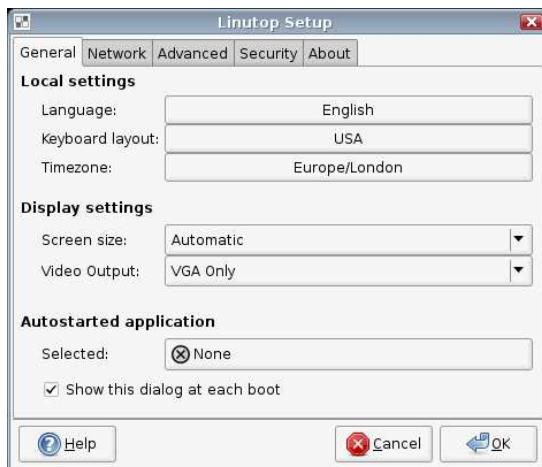
Open Office 2.4, Firefox 3.0, Xfce 4.4.2, Gcalctool 5.21, VLC 0.8.6, PDF Viewer, Text editor, On screen keyboard, GQ view Picture viewer, Flash player, File manager, Archive manager.

### supported Formats:

Documents: DOC, XLS, PPT, PPTX, PDF, ZIP, RAR ...

Multimedia: MP3, MP4, MPG, AVI, FLV ...

## Linutop Setup Menu:



Linutop configuration menu will help you to set up linutop software. You can select the language, keyboard layout and time zone, Screen size and auto started applications.

Linutop can be configured to start automatically after reboot: Multimedia files: audio, video or play list, slideshows, Linutop Kiosk or any added software.

**Linutop Kiosk** has a separated configuration menu.

At each start you can have your linutop:

- Display a Web page,
- Display a presentation,
- Play music or Video stream or file

Or you can start automatically a specific application. Once validated all changes will take effect at the next reboot

You can access the menu in:  
Applications > Settings > Linutop Setup

## Linutop Network Setup:



**- Enable Network Manager:**  
it simplifies the uses of USB wifi keys

**- Network configuration:**  
By default the network uses DHCP to connect to a local network and/or internet and no action from your part should be needed.

You can configure Static IP, Wifi usb key with WEP, WAP, Or Modem

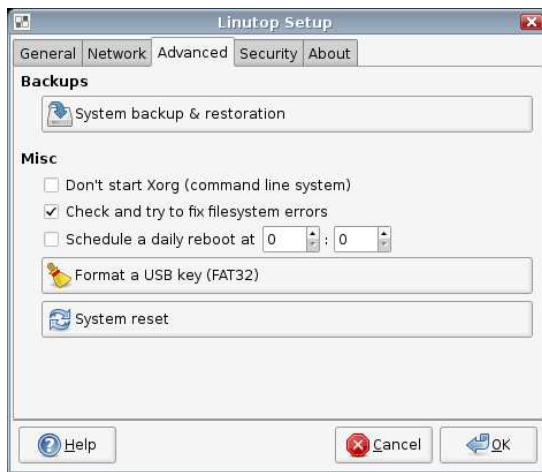
**- Share folders:**  
Helps you to set up and share linutop data with your network.

**- Windows Shares:**  
Helps you to set up an access to a shared directory on a Windows system via the network. Enter the IP address of the Windows unit and the name of the shared directory.

**- Remote access**  
Configure the remote access to your linutop network and a VNC client, with its IP address on the 'About' tab of the linutop setup menu.

You can access the menu in:  
Applications > Settings > Linutop Setup    Network tab

## Advanced configuration:



### - Backup/Restore

Save your configuration on a 1GB or more USB Key. The USB key is a bootable backup.

Restore your linutop by booting on a Linutop USB Key and restore on the internal device: `/dev/had`.

### - Misc: (only for Advance Users)

- Command line system without Xorg (no graphic interface)
- Disk checksum at boot.
- Daily reboot to lean up the memory
- Format a USB key in FAT
- System Reset to remove all newly installed software and configs.

You can access the menu in:

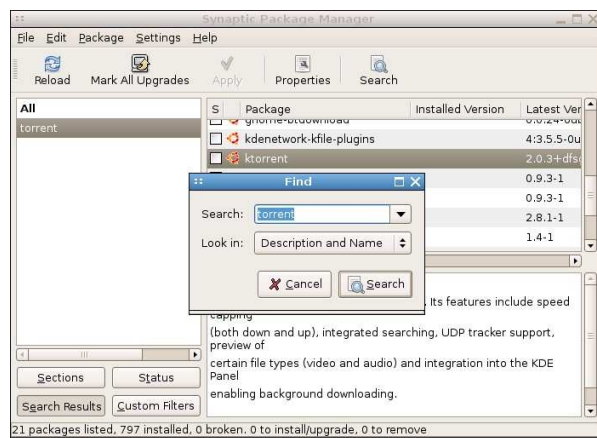
Applications > Settings > Linutop Setup, Advanced Tab

## Applications:

**Internal Memory:** 1GB internal memory contains the Operating System and preinstalled software. It can be easily updated with a USB Key.

400 MB is available for add on software or data.

### Adding software:



You can add software by using synaptic ( menu>system>synaptic)  
Added software will be kept in persistent mode only.

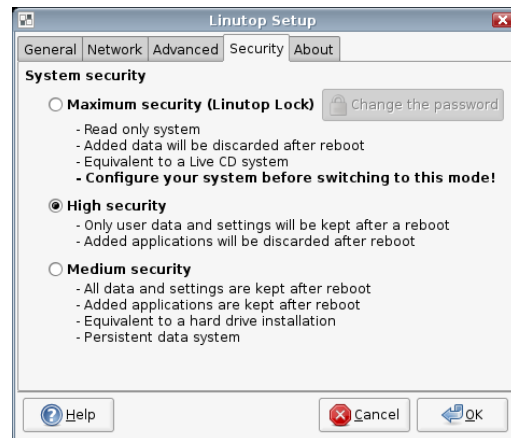
To turn on Persistent mode: go to  
Applications > Settings>Linutop configuration editor, Advance Tab  
And select full persistence and reboot.

You can access the menu in:

Applications > System > Synaptic Package Manager

## Security:

Your Linutop can be locked with a password, and will be restored as it was at the lock point.



This feature can minimize the support cost and is **effective after reboot**.

1) Switch to lock mode (**Maximum security**) After a reboot, an unprivileged user will be logged in.

2) **High security** (user settings and data only persistence)

3) Switch to **Medium security** to set up the system (add applications, edit the default settings and change the system configuration...). Log out and relog as user 'user' to setup the unprivileged user preferences

To deactivate the locked mode you have to Quit, Log Out and Log In under "linutop" account with you password and go back to this menu.

You can access the menu in:

Applications > Settings > Linutop Setup , Security Tab

## Bios Setup:

**Linutop Bios:** by pressing **Delete** key during boot  
You can configure Boot priority

**PXE Boot configuration:** by pressing **Shift F10** keys

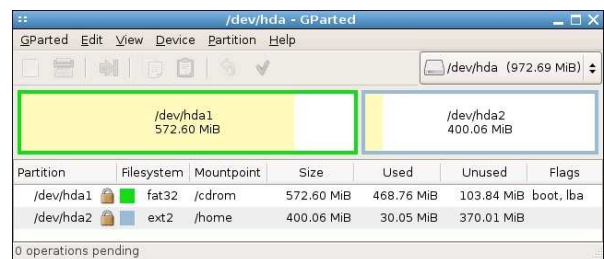
If you want to remove PXE boot sequence:

Select in the Configuration Menu

**Boot Order to ROM Disable**

Save by pressing **F4** key and reboot

### Directory Structure:



2 partitions:

`/cdrom` is a **fat32** 600Mo (windows readable) containing the system  
`/home` is an **ext2** 400Mo for user data.

Screen saver pictures in: `/cdrom/photo`

Play lists samples in: `/cdrom/playlists`

User data are stored in: `/home/linutop`

User desktop is stored in: `/home/linutop/Desktop` (Linux is case sensitive)

### Peripherals compatibility, Setup...

Please check on our Wiki [www.linutop.com/wiki](http://www.linutop.com/wiki)

Last recommendation: Always have a backup of your data and system